

CF&S GROUP

2024

About



CF&S GROUP

CF&S is an international transport and logistics group established in Tallinn, Estonia, in 1997.

CF&S Group offices are located in Estonia (Tallinn), Latvia (Riga), Lithuania (Klaipeda), Kazakhstan (Almaty), Poland (Poznan), Uzbekistan (Tashkent), the Netherlands (Venlo), Germany (Hamburg, Düsseldorf, Bremen), Turkey (Istanbul), Georgia (Tbilisi).

The company has over 220 employees.

CF&S is part of Baltic Maritime Logistics Group

DAKO Worldwide Transport GmbH is part of CF&S Group since 2023

Our values and mission



Values

- Flexibility
- Personal approach
- Professionalism
- Efficiency

Mission

To be a highly-qualified and professional partner in full logistics service.

CF&S Estonia AS



CF&S Estonia AS provides high-quality and professional logistics services in Estonia and all over the world since 1997.

When you partner with CF&S Estonia AS, you can be assured you are working with a financially sound company. In 2023, the consolidated net turnover of CF&S Group was over 143 MEUR, 55 MEUR net sales revenue by CF&S Estonia AS.

Quality Management



CF&S quality management system is approved by DNV (Det Norske Veritas) and it conforms to ISO 9001:2015 standard requirements within the entire organization.



We have implemented an environmental management system in our warehouse, which is approved by the certification body (DNV) and conforms to ISO 14001:2015 standard requirements.

Country flag hoisted

	ESTONIA Tallinn
	LATVIA Riga
	LITHUANIA Klaipeda
	KAZAKHSTAN Almaty
	POLAND Poznan
	USBKISTAN Tashkent
	NETHERLANDS Venlo
	GERMANY Hamburg
	TURKEY Istanbul
	GEORGIA Poti

1997

2005

2013

2013

2018

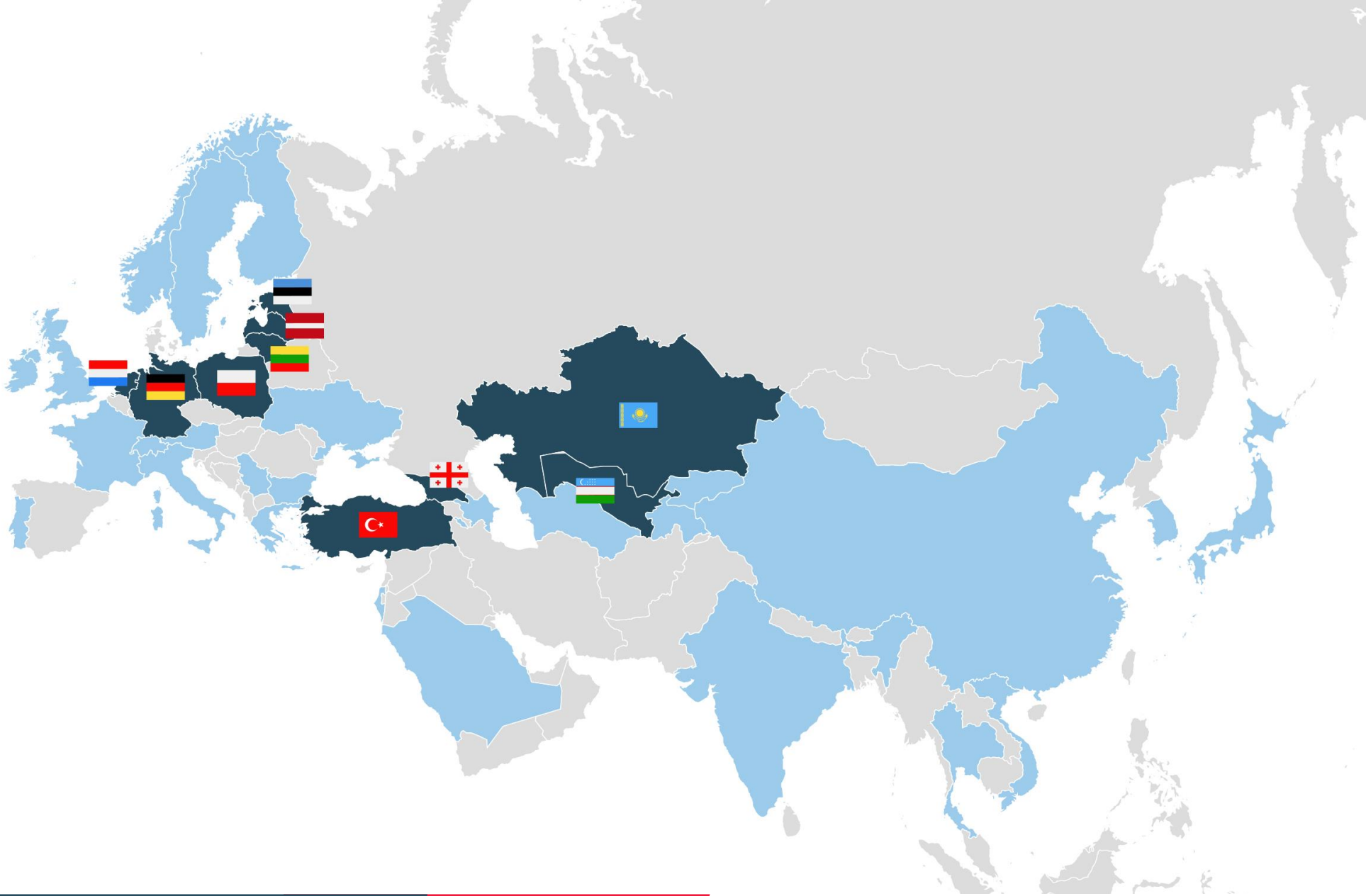
2019

2019

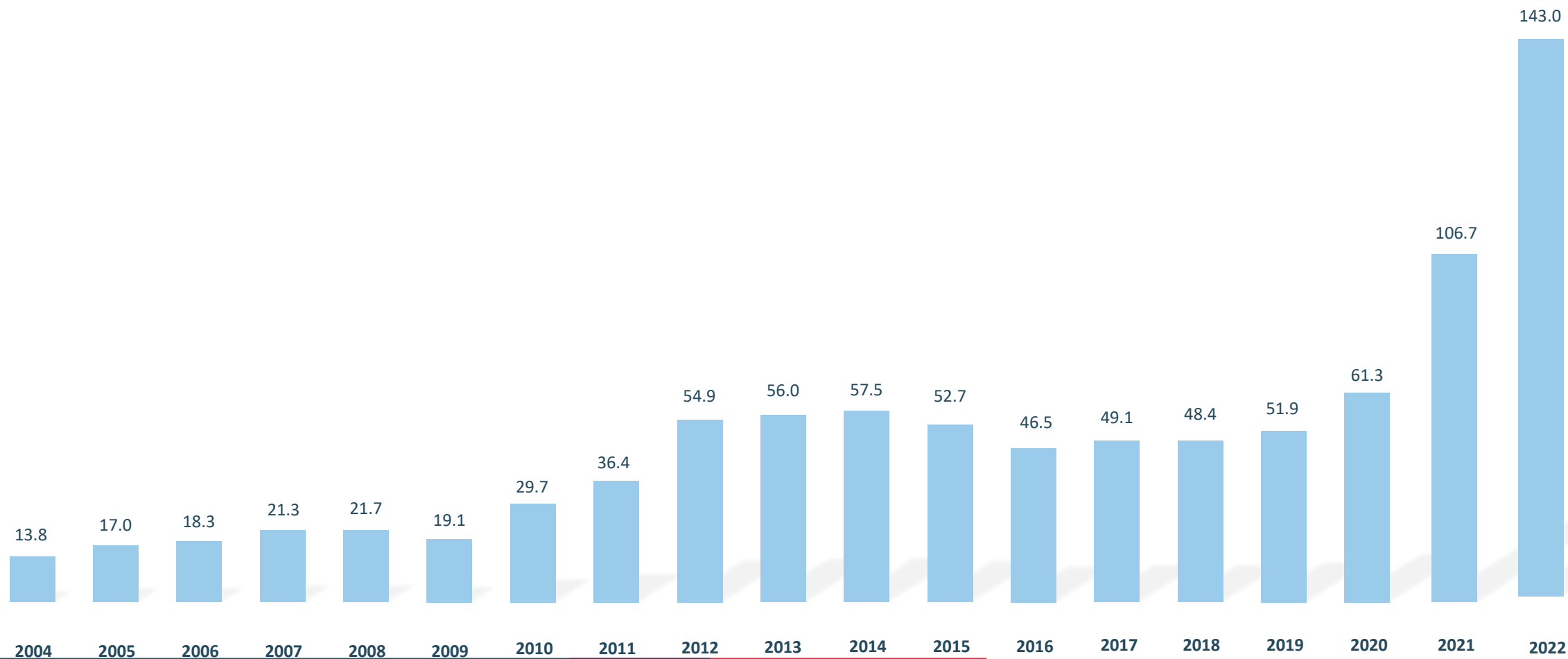
2022

2023

2024



Development of CF&S GROUP'S turnover



Our core business

- Railway transport
- High & heavy transport
- Port Agency, Chartering & Breakbulk shipping
- Container transport
- Airfreight
- Road transport
- Warehousing & distribution
- Customs agency & brokerage

Railway transport

We arrange rail transport across Europe, the Caucasus, China, as well as the Central Asian countries.



- Own fleet of new closed wagons - capacity 150 m3 / model 11-7038 and 161 m3 / model 11-2135-01



- Own fleet of 80' (24 m) fitting rail platforms with wooden floor / model 23-469-07, ideal for transporting of long-length loads

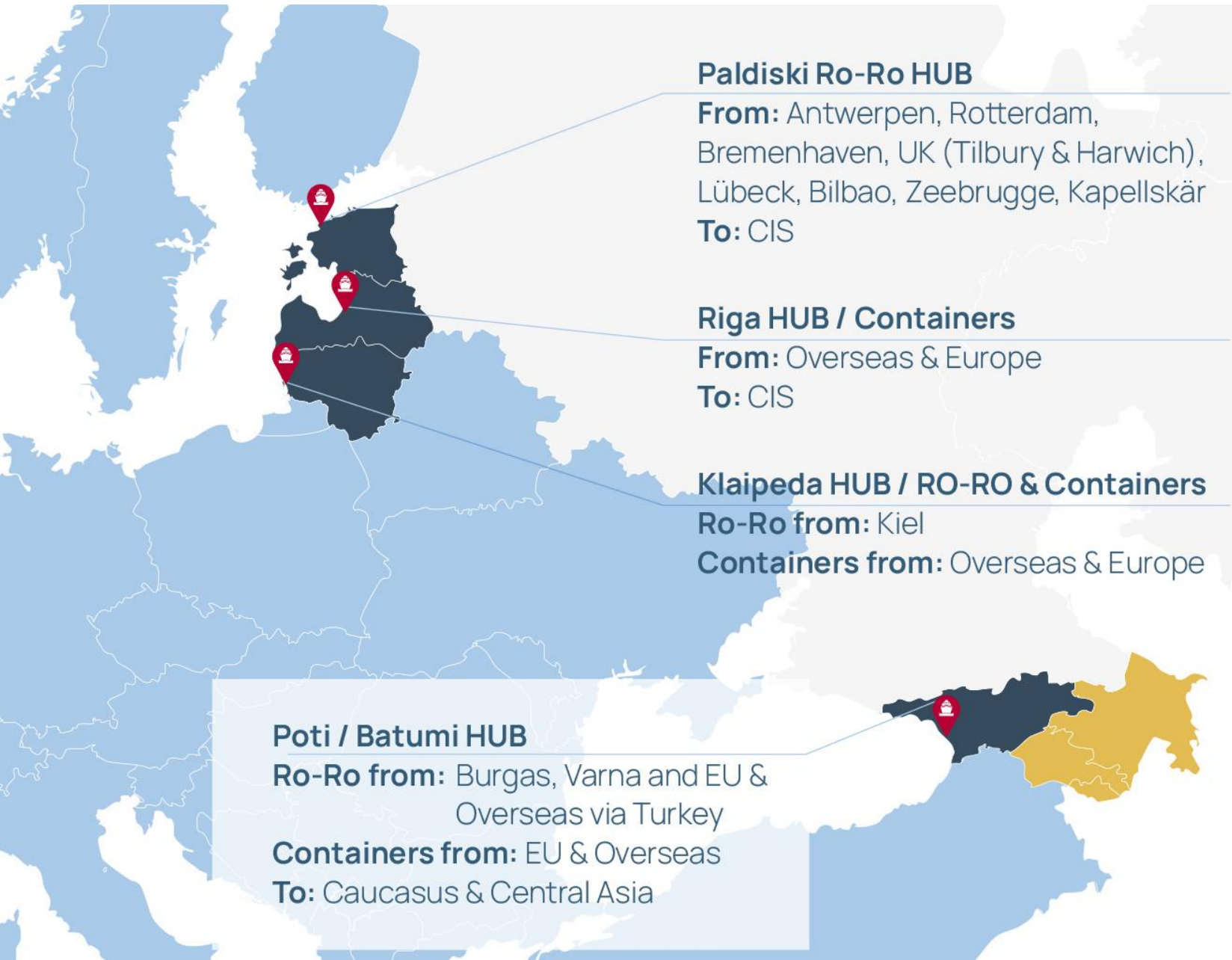


- Own fleet of 60' (18,4m) fitting rail platforms with wooden floor / model 13-935A-04



- Own fleet of 20'DC and 40' (HC) railway containers

CF&S Railway HUBs



Paldiski Ro-Ro HUB

From: Antwerpen, Rotterdam, Bremenhaven, UK (Tilbury & Harwich), Lübeck, Bilbao, Zeebrugge, Kapellskär
To: CIS

Riga HUB / Containers

From: Overseas & Europe
To: CIS

Klaipeda HUB / RO-RO & Containers

Ro-Ro from: Kiel
Containers from: Overseas & Europe

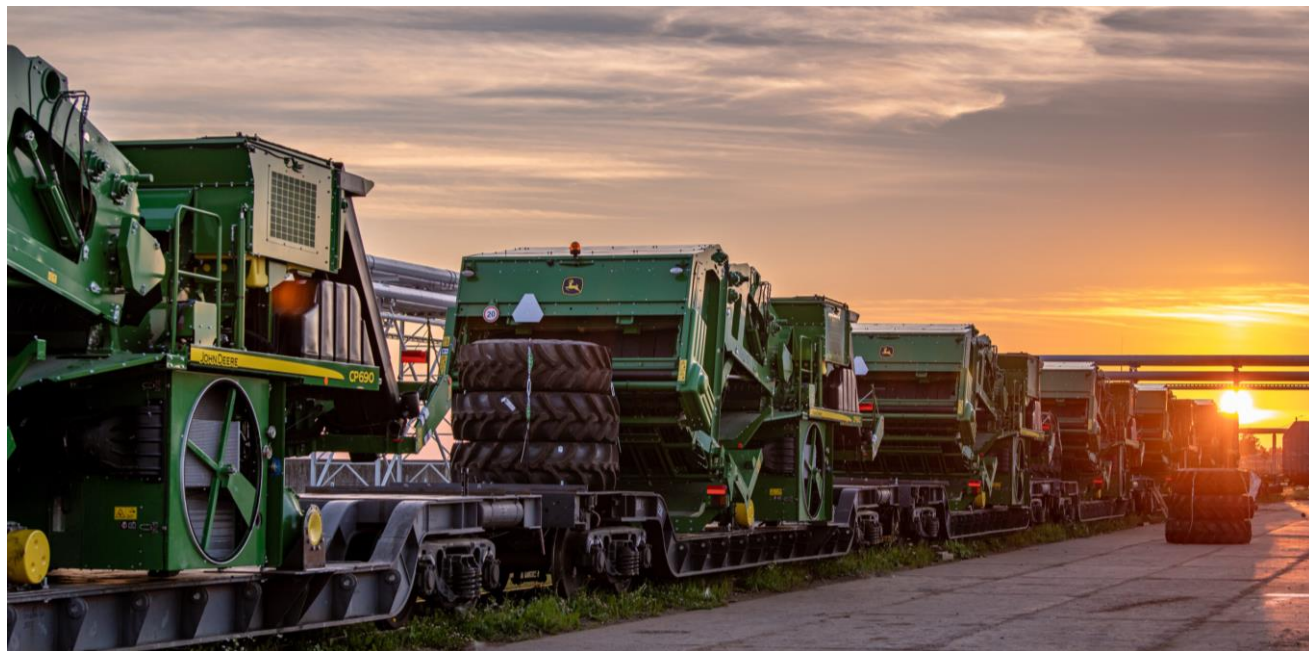
Poti / Batumi HUB

Ro-Ro from: Burgas, Varna and EU & Overseas via Turkey
Containers from: EU & Overseas
To: Caucasus & Central Asia



CIS countries:

Armenia,
Azerbaijan,
Kazakhstan,
Kyrgyzstan,
Tajikistan,
Turkmenistan,
Uzbekistan.





HITACHI



CF&S Poti HUB / Middle Corridor

- 3 terminals
- 5 ha of territory
- loaders from 1.5 to 5 tonnes
- reach stacker up to 45 tonnes
- reach stacker up to 70 tonnes

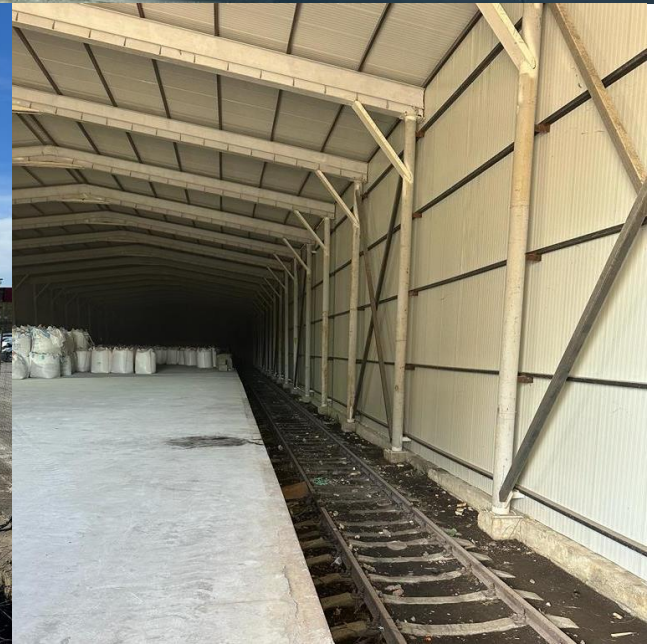
Our services:

- Cargo delivery from Poti port to inland terminal
- Reloading
- Cargo loading and lashing on railway platforms
- Loading schemes
- Documentation
- Trucking from Poti/Batumi to Central Asia
- Containers delivery to Central Asia and back

CF&S Poti Transit HUB







High & heavy transport and renewable logistics

Carrying out transportation of oversized cargoes by sea, road and rail across the Globe.

We operate with suitable ships, trucks and own railway rolling stock.

We transport:

- Commercial & heavy vehicles
- Agricultural and building machinery
- Mining, lifting and road construction equipment
- Wind power plant equipment
- Boats and yachts
- Metal products





CF&S

The Art of Logistics

+



DAKO
WORLDWIDE TRANSPORT

FIRST CLASS IN PROJECTS

CF&S Group acquired DAKO Worldwide Transport
in December 2023



CF&S



FIRST CLASS IN PROJECTS

DAKO WORLDWIDE TRANSPORT GMBH

Specialized in international forwarding and transportation of:

- capital goods / CAPEX projects
- heavy and bulky machinery / equipment including complete industrial plants

Strong focus in developing tailor-made logistic solutions for turn-key EPC projects.

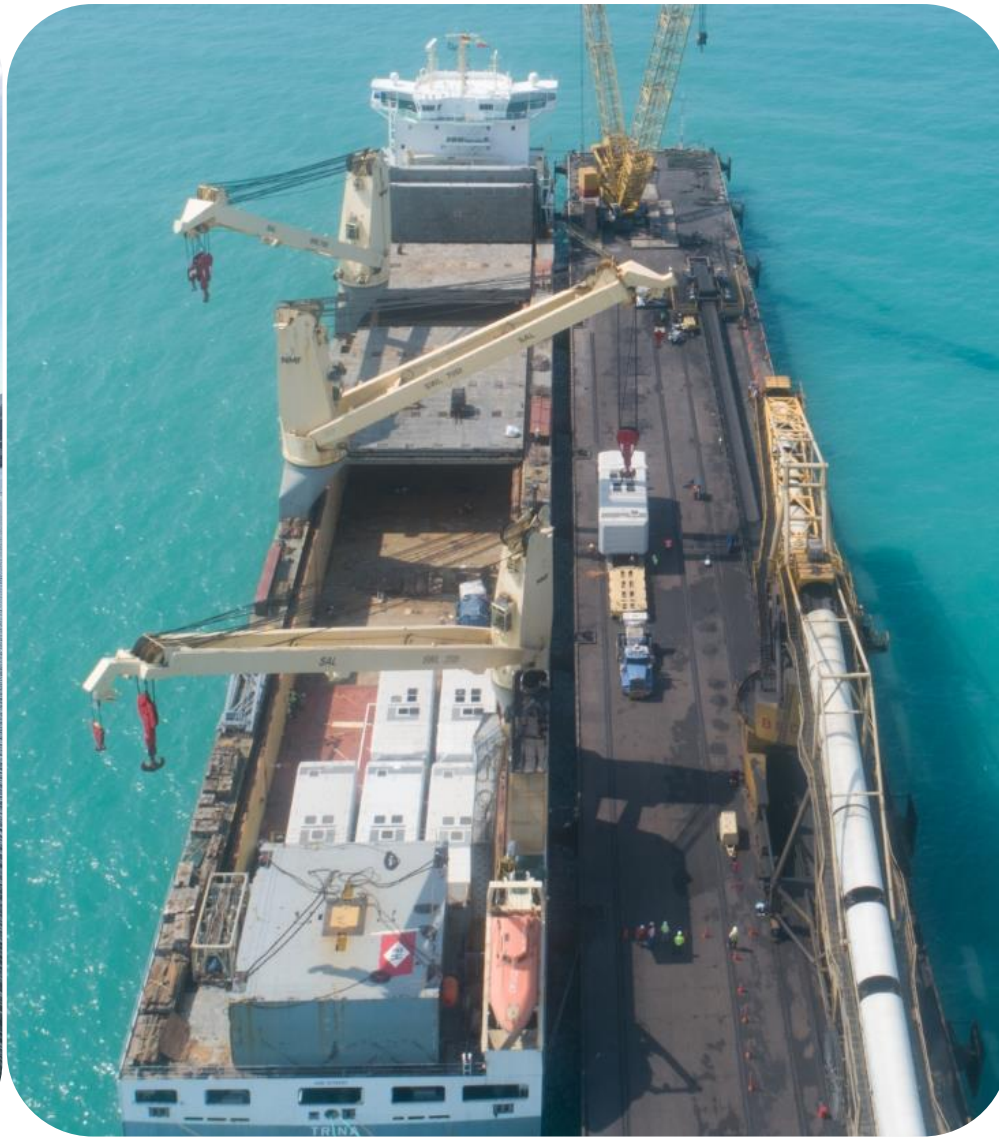
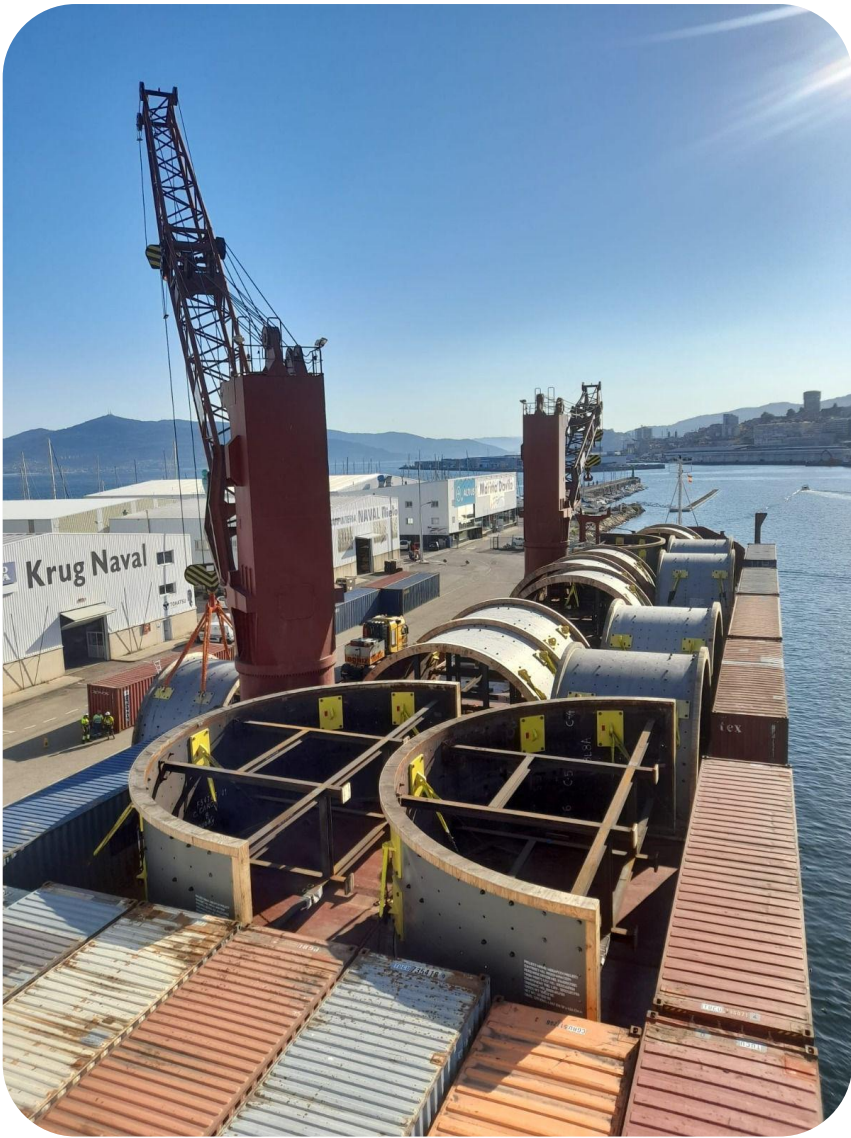
We have vast experience in transportation of:

- petrochemical plants
- power stations
- power distribution systems
- steel and cement factories worldwide

Including services in countries of destination:

- port handling
- customs clearance
- onforwarding and delivery of items free foundation at the construction site.

Management and staff is highly qualified and has experiences in handling projects worldwide of more than 40 years.





Member of



Port Agency, Chartering & Breakbulk Shipping

Own fleet of **43 vessels** in group level

Main markets:

- Baltic Sea
- North Sea
- Mediterranean Sea
- Black Sea



Container transport

Worldwide management of FCL (Full-Container Load) and LCL (Less-Than-Container Load) for all types of containers.

Reliable FCL door-to-door services and LCL (de-) consolidation.

We offer:

- FCL & LCL shipments
- Preparing customs clearance documents
- Packing and securing cargo into container
- Survey and quality control
- Cargo insurance



CF&S



Airfreight

A worldwide transportation of any cargo type thanks to a long-term co-operation with all major airlines.

We offer:

- Door-to-door airfreight solutions
- Charter and part-charter flights
- Oversized transport
- Cargo insurance
- Economy and next flight out services

Road transport

From small parcel shipments to over-dimensioned loads through wide European network.

Scheduled groupage departures from Europe and Scandinavia to the Baltics for various cargo types.

We transport:

- Full truck loads (FTL) and groupage cargo (LCL)
- Frozen, dangerous (ADR) and oversized cargo

We offer:

- Intermodal transport solutions
- Customs clearance, transit declaration and cargo insurance
- Track 'n trace and online booking



CF&S

Warehousing and distribution



A-class storage space is
12500 m²



The warehouse is fully
equipped with storage
racks for approximately
17, 000 EUR pallets



25 loading ramps



7000 m of small
shelf storage

We offer:

- Terminal and warehouse services
- Handling and storage
- Quality management system
ISO 14001:2015
- Pick and Pack services
- Customs bonded terminal and warehouse
- Value added services (labeling, re-packing
etc.)
- Customs agency services
- Daily distribution to the Baltics and Finland



CF&S

Member of



Customs agency & brokerage

Full support with complete customs agency services.

We assist you with all relevant conventions in the European Union's custom zones and its relations with third countries.

Preparation of:

- All kind of customs declarations (export / import)
- T2L, T2LF declarations
- Declaration of preferred origin (EUR.1.A.TR)
- Transit declaration (T1 / T2)
- Extension of the terms of payment integrated with import tax for contractual customers

Networks and memberships





Well, if you transport logs out of the woods it might not be needed.

Short film about CF&S: <https://bit.ly/3sKEvL1>

Thank **you!**

CF&S

The Art of Logistics



CFS.NET